

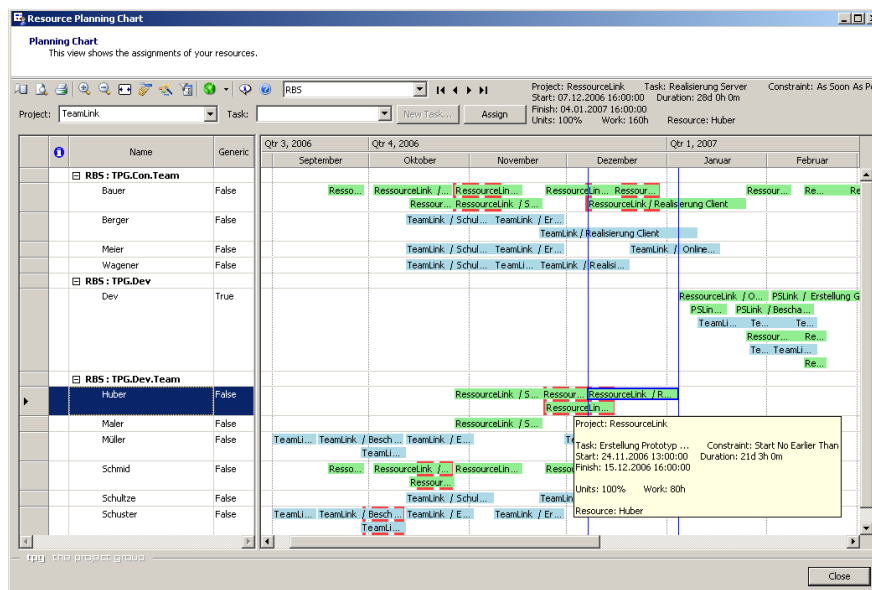
TPG ResourcePlanning Graphical Optimization of Resource Allocations within a Portfolio

TPG ResourcePlanning is used to graphically display and edit resource planning information in projects and portfolios. All tasks assigned to a resource are shown as individual bars in the chart. The height of the line corresponds to the workload of the resource, with overloaded resources marked in red.

Project managers can plan and optimize their resources by simple drag and drop, moving them along the time axis or between projects. The new information is then synchronized immediately with the open Microsoft Project files. TPG ResourcePlanning can be used with Microsoft Project Server. It includes an integrated coordination and approval process. This is particularly useful for substituting generic resources with real ones.

Compatibility:

Microsoft Project Server 2003



The Benefits:

- Increased efficiency for resource planners from graphical overview of information they need, which is otherwise only available as tables in Microsoft Project
- Meaningful, printable graphics to underpin reporting
- Simple, efficient substitution of generic resources with real people

Features At-a-Glance:

- Use with Microsoft Project Server including integrated coordination and approval process
- Resources can be moved along time axis or between projects
- Printable graphics

www.theprojectgroup.com/E/resourceplanning